

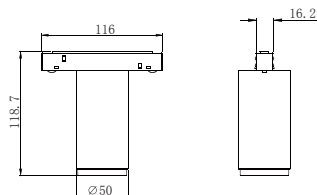
S50-L

Ceiling mounted Series



- 黑色/Black
- 灰色/Grey
- 白色/White

線圖/Dimensions



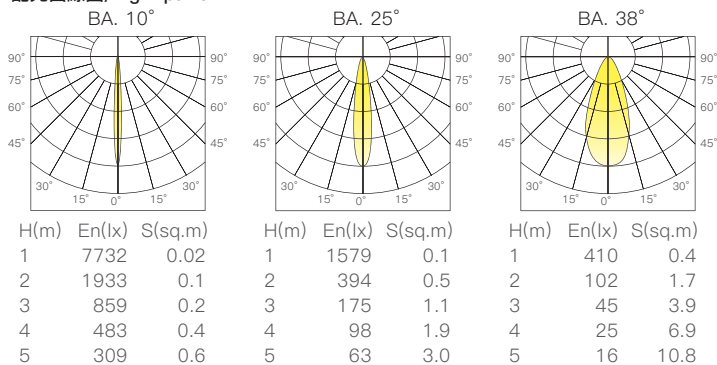
調光控制系統/Dimming Control



規格/Technical Specifications

輸入電壓:DC48V
 功率:10W
 光通量:420lm
 材質:鋁
 光束角:10°
 濾片角度:15°/25°/38°/10x35°/蜂網片
 顯示指數:≥90
 色溫:2700K/3000K/4000K
 Input Voltage:DC48V
 Power:10W
 Luminous Flux:420lm
 Material:Aluminum
 BA.:10°
 Filter Angle.:15°/25°/38°/10x35°/Honey Comb
 CRI:≥90
 CCT:2700K/3000K/4000K

配光曲線圖/Light pattern



光學配件/Front Ring Color



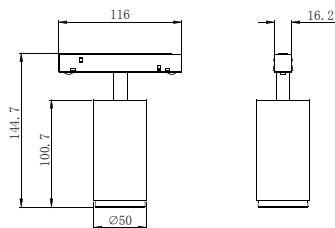
S50-1-L

Ceiling mounted Series



- 黑色/Black
- 灰色/Grey
- 白色/White

線圖/Dimensions



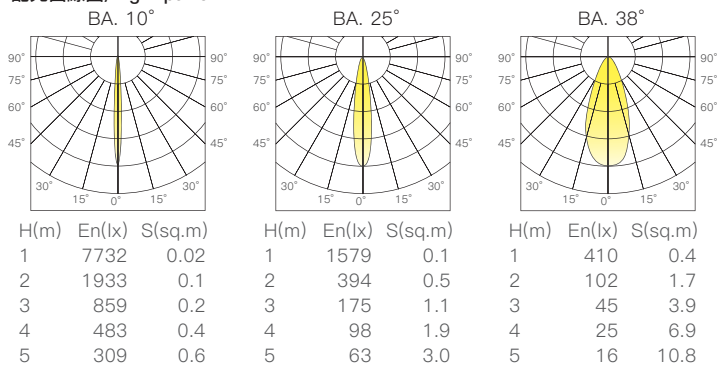
調光控制系統/Dimming Control



規格/Technical Specifications

輸入電壓:DC48V
 功率:10W
 光通量:420lm
 材質:鋁
 光束角:10°
 濾片角度:15°/25°/38°/10x35°/蜂網片
 顯示指數:≥90
 色溫:2700K/3000K/4000K
 Input Voltage:DC48V
 Power:10W
 Luminous Flux:420lm
 Material:Aluminum
 BA.:10°
 Filter Angle.:15°/25°/38°/10x35°/Honey Comb
 CRI:≥90
 CCT:2700K/3000K/4000K

配光曲線圖/Light pattern



光學配件/Front Ring Color

黑色
Black鉻色
Chrome金色
Gold黑鉻
Black
Chrome玫瑰金
Rose
Golden

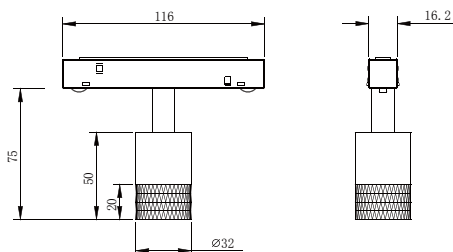
S51-L

Ceiling mounted Series



- 黑色/Black
- 白色/White

線圖/Dimensions



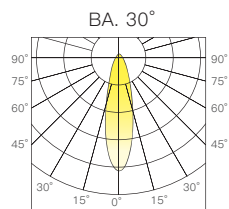
調光控制系統/Dimming Control



規格/Technical Specifications

輸入電壓:DC48V
 功率:3W
 光通量:190lm
 材質:鋁
 光束角:30°
 顯示指數:≥90
 色溫:2700K/3000K/4000K/雙色溫
 Input Voltage:DC48V
 Power:3W
 Luminous Flux:190lm
 Material:Aluminum
 BA.:30°
 CRI:≥90
 CCT:2700K/3000K/4000K/Tunable

配光曲線圖/Light pattern



H(m)	En(lx)	S(sq.m)
1	646	0.2
2	161	0.9
3	71	2.1
4	40	3.7
5	25	5.7



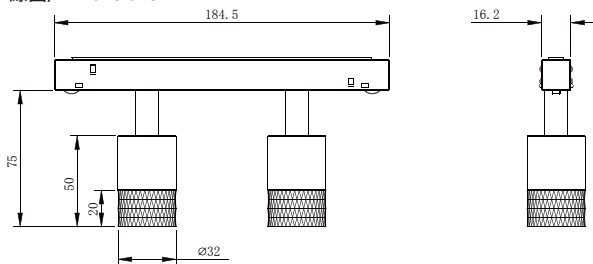
S51-L-D

Ceiling mounted Series



- 黑色/Black
- 白色/White

線圖/Dimensions



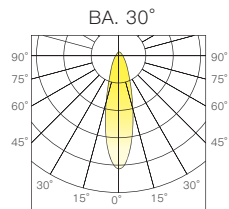
調光控制系統/Dimming Control



規格/Technical Specifications

輸入電壓:DC48V
 功率:3W*2
 光通量:190lm*2
 材質:鋁
 光束角:30°
 顯示指數:≥90
 色溫:2700K/3000K/4000K/雙色溫
 Input Voltage:DC48V
 Power:3W*2
 Luminous Flux:190lm*2
 Material:Aluminum
 BA.:30°
 CRI:≥90
 CCT:2700K/3000K/4000K/Tunable

配光曲線圖/Light pattern



H(m)	En(lx)	S(sq.m)
1	646	0.2
2	161	0.9
3	71	2.1
4	40	3.7
5	25	5.7

